

# John Deere Operations Center

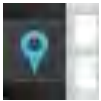
Useful tools and how they can help you



Need help getting started? Start with [step-by-step instructions for Account Setup](#).

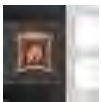
## PLAN

### Land Manager



Be confident the right geographic information is being sent to your display. Create/manage boundaries, guidance lines, and flags.

### Product Manager



Reduce data entry errors and redundancy. Enter/manage inputs such as varieties, chemicals, and fertilizers.

### Setup Builder



Reduce the chance of operator data entry error by creating a setup file. Help your operator find the right field by including a field boundary and using Field Locator on your display.

### Agrian Prescription Creator



Create a prescription to ensure you're following the 4 Rs for your operation: right product, right rate, right time, right location—all while potentially reducing costs and improving profitability.

### John Deere Data Manager



Easily move files from Operations Center to USB or vice versa. Import data from a wide variety of non-Deere displays as well.

### Files Manager



Send files to your fleet or share with your trusted partners.

## MONITOR/CONTROL

### MyOperations™



Manage quality concerns anytime, anywhere by viewing machine information, progress, and alerts. View performance by product, machine, or field. View and adjust machine settings.

### Operations Center: Map



Stay informed about what's happening with equipment and operators using features such as Location History and Remote Display Access (RDA).

## ANALYZE

### Agronomic Report



Easily view, print, and export tabular information to track input costs as well as yields. Know where and when products were applied.

### Field Analyzer & Field Analyzer Beta



Analyze, edit, and make collaborative decisions with partners, using the same shared information from Field Analyzer or Field Analyzer Beta.

### Machine Analyzer



Benchmark one machine against others in your fleet, comparing many attributes (such as working, idle, or transport times) to learn how a single machine or your entire fleet is performing. Compare your machines against partnered machines as well.



Need more information or help using these tools? [Visit our help site for tips and how-to videos.](#)



# Account Setup

## Getting started in Operations Center



JOHN DEERE

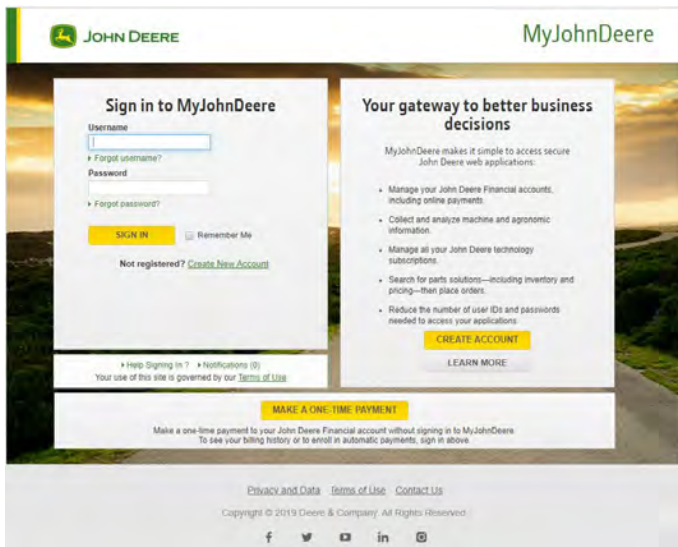
### Create Account in MyJohnDeere.com

Open web browser (Chrome preferred) and navigate to <https://myjohndeere.deere.com/>.

If you already have an account but don't remember User Name or Password, click [Help Signing In](#).

### Create a new MyJohnDeere account

If you don't have an account, click [Create New Account](#).



Create a unique Username (no special characters).

Enter personal information (name, address, etc.).

If prompted with "Your account may already exist in our system" follow the on-screen instructions to either continue or retrieve Username/Password.

### Validate account

After completing account setup you'll need to validate your information via an email sent to the address used during profile setup.

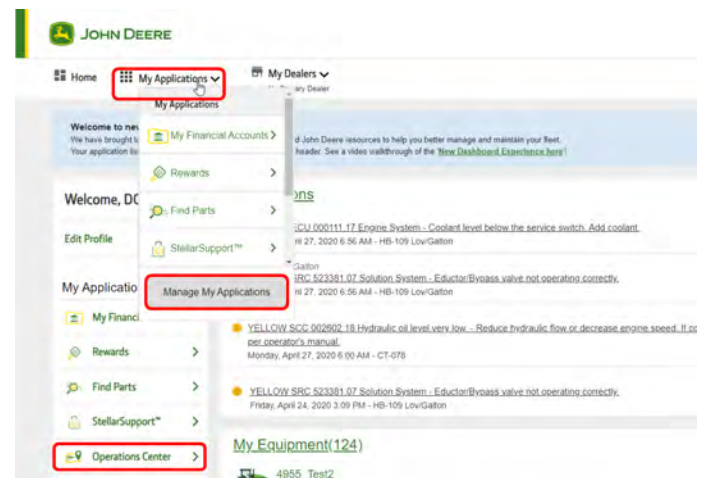
After validating email, create a password and challenge questions.

### Log In & Configure MyJohnDeere

### Configure the MyJohnDeere dashboard

Log into <https://myjohndeere.deere.com/> with your Username and Password.

Click *My Applications* and select *Operations Center* to add it to MyJohnDeere dashboard.



### Create an Organization and Set Preferences

Select your Country.

Name your Organization.

Accept Organization Terms and Conditions.

That's it! You've created a username and organization.

Fine-tune your Operations Center to suit your needs; this can be done via User Preferences and Organization Preferences sub-menus.

### Additional resources

[Organization Preferences](#)

[Operations Center Menus and Icons](#)



# Land Manager

Boundary and guidance management



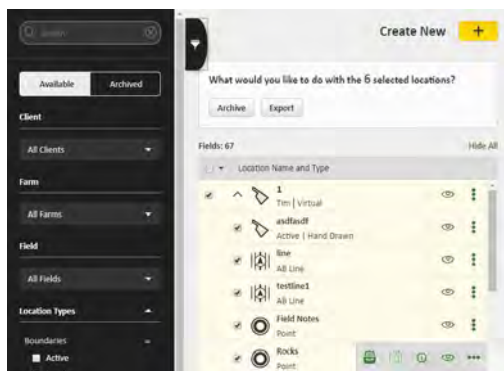
JOHN DEERE

## Create New Fields

### Actions

Add a Field, Boundary, Guidance Line, or Flag within Land Manager.

Create boundaries from previous operations or by clicking around a satellite image of a known field location.



## Merge Boundaries

### Actions

Merge neighboring fields to farm as one field.

Bring guidance lines and flags to one field.

## Manage Interior Boundaries

### Actions

Draw desired interior boundary; mark field as passable or uncheck possible if boundary is impossible.

Automatically calculate acres of shapes drawn.

## Edit Existing Lines and Boundaries

### Actions

Rename Boundaries, Farms, Fields, Flags, and Guidance Lines.

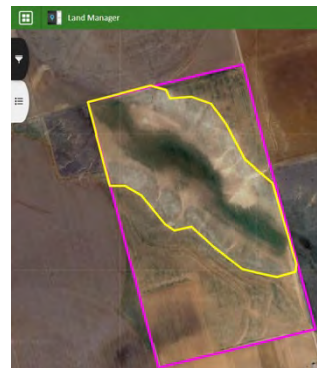
Edit Boundaries, Flags, and AB Lines.

## Archive and Delete Flags, Boundaries, Guidance Lines

### Actions

Check on desired attributes and archive.

Delete and restore attributes if desired.



## Export Fields and Reference

### Actions

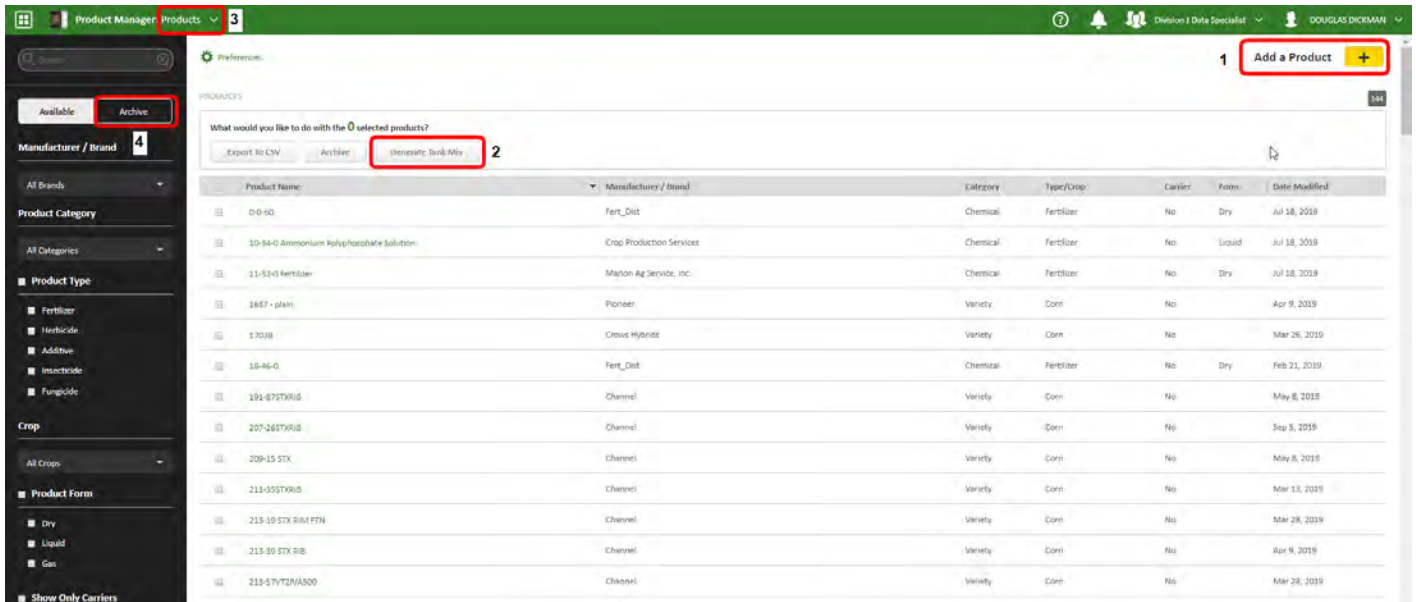
Use the Measure Tool for quick analysis.

Export as a printable PDF or XLSX; [see help files for more details](#).



# Product Manager

Record products and tank mixes



## Add Products ①

### Consistent records

Use the *Add Product* button to add seed varieties, pesticides, fertilizers (anything that will be applied to your land).

### Maintain EPA registration numbers

EPA number automatically adds from library if available. If not, manual entry is available.

## Create Tank Mixes ②

Select desired products and click *Generate Tank Mix*. System automatically calculates acres per tank, tanks needed to finish, and total volume required to cover the acres (also partial loads).

## Print/Expert/Archive Tank Mixes ③

Reduce potential mixing errors by printing or exporting tank mixes and products. Archive old/obsolete tank mixes if desired.

## Edit/Archive/Restore Products ④

### Edit

Edit product names or desired crop at any time. Products not in the library can be added manually. Note: *Manufacturer/Brand* offers option for *Other*.

### Archive

Archive old/obsolete products from your list. Make a mistake and need to restore? Click *Archive* from the filter and restore products.

## Send to Deere Displays

### Simplify in-cab experience

Reduce operator input and complexities. Using Product Manager coupled with Setup Builder you can add Products and Tank Mixes to setup files to send wirelessly to a machine (requires Wireless Data Transfer) or download to USB.



# Setup Builder

Create and manage information sent to displays



JOHN DEERE

*\*Must enter inputs for all six of these groupings in order to complete file before sending to machines\**

## File Details

### Input display type

Use drop down box to choose display model file will be sent to.

### Create file name

Type unique file name to reference later.

### File type

Start a new file or create from an existing one.

## Land

### Select land information

Check the boxes for boundaries, flags, and/or guidance lines you'd like to include.

Select *Include Variety Locator* to utilize variety information recorded during planting for enabling John Deere displays to automatically detect and document the variety during harvest.

**\*Tip: Use the left-hand bar if available in each section to filter entries based on key word searches or by category.**

## Equipment

### Select equipment information

Include all equipment this file will be created for; be sure to also select implement tab to include implements to be used during operation, such as planter or combine header.

## Products

### Select product information

Include all products or tank mixes to be used during operations selected with checkmark boxes.

**\*Tip: You can add additional or missing items from the list by selecting "+" button at the base.**

## Operators

### Select operators

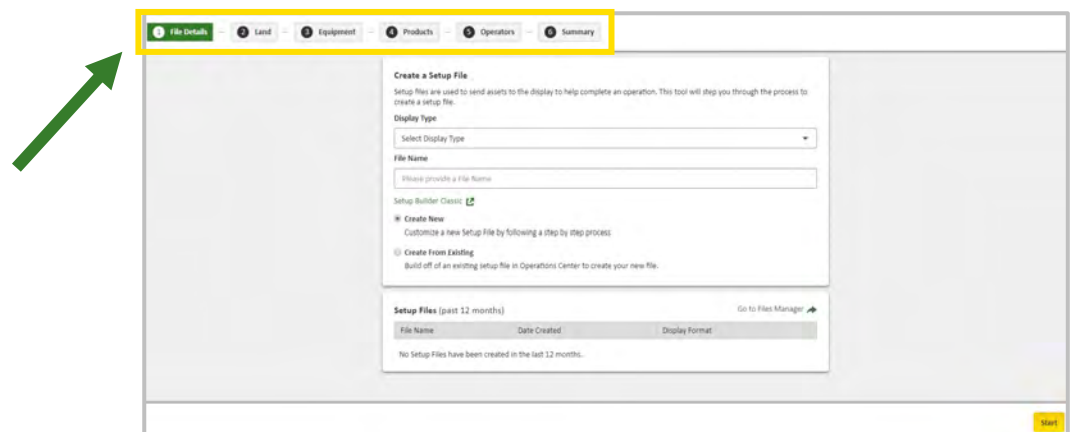
Use check boxes to include names of all operators who will use the file to complete the operation and be included in reports.

## Summary

### Review summary details

Select edit file details to make changes; if correct, select *Create File* button in lower right corner.

**\*Note: If machines selected in equipment tab are enabled for Wireless Data Transfer, the setup file will automatically be sent to the machine when complete; setup file is also available in Files Manager to share with others or export to USB.**



Need more information or help using Setup Builder? [Visit our help site for tips and how-to videos.](#)



# Data Manager

Transfer files between display & Operations Center



# JOHN DEERE

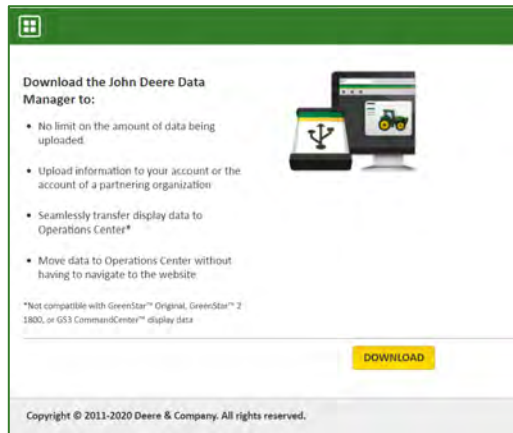
*\*Not compatible with GreenStar™ Original, GreenStar™ 2 1800, or GS3 CommandCenter™ display data\**

## Download Data Manager to Desktop

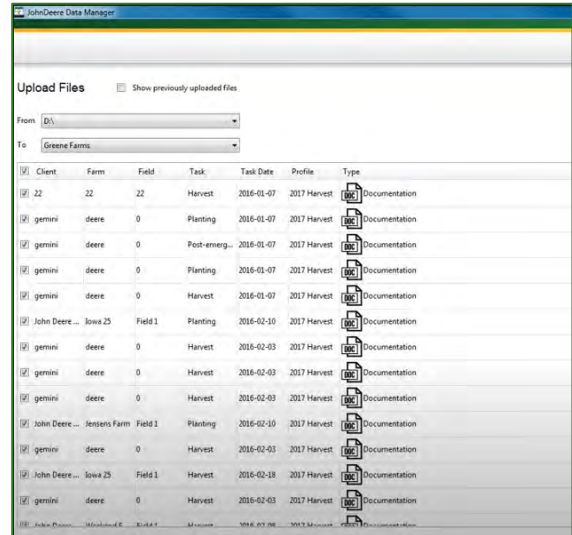
### Unique Tool Setup

Download from Operations Center Tools page.

Install, then locate and initiate from computer Start Menu or desktop Shortcut.



**\*Note:** Files missing from this list either aren't included on USB, are an incorrect file format, or have already been uploaded to Operations Center; for the last case, select "show previously updated files" to upload those files again.



## Seamless Transfer of Data

### Start-Up

Automatically navigate to sign into Operations Center account.

### Sync with Setup Files

With USB inserted into computer, select correct computer drive folder in *From* drop down; ensure that correct MyJohnDeere Org account appears in *To*.

Checkmark desired files to upload into Operations Center account; files shown include client/farm/field, task, task date, profile, and type—providing more options for filtering desired data.

Select upload button in bottom right corner to send files.

**\*Tip:** Checkmark single box in title to select all available files listed.

## Check Transferred Files

### Files Manager Tool

Log into Operations Center from MyJohnDeere; navigate to Files Manager using menu button in top left corner of Operations Center window.

Check status of recently uploaded file by searching the full list of data files (the tool lists all files received for the account).

**\*Tip:** Use left-hand filter bar in Files Manager Beta to narrow list of files by Client, Farm, Field, or Date created.

Once file status shows as complete, data has successfully uploaded into account; the data is ready to view and analyze via various tools within Operations Center, such as Agronomic Report or Field Analyzer.

There is no limit on the number of files or data to be uploaded into Operations Center.

Need more information or help using Data Manager? [Visit our help site for tips and how-to videos.](#)



# Files Manager

Move files in and out of Operations Center



JOHN DEERE

Name	Status	Field, Client, Farm	Type	Size	Date Created
DougTest.zip	File processing finished	North Dickman - Herscher   Home	Setup	582.4 KB	Apr 20, 2020
DataManager_158352703238.zip	File processing finished	cm02 CM   Connect Mobile	Setup	19.4 KB	Mar 6, 2020
DataManager_158352237161.zip	File processing finished	cm02 CM   Connect Mobile	Setup	19.4 KB	Mar 6, 2020
DataManager_15835151987.zip	File processing finished	cm02 CM   Connect Mobile	Setup	19.4 KB	Mar 6, 2020
Planter.zip	File uploaded by DOUGLAS DICKMAN	-   -	Invalid	561.5 KB	Mar 6, 2020
Harvest.zip	File uploaded by DOUGLAS DICKMAN	-   -	Invalid	989.8 KB	Mar 6, 2020
DataManager_158350994643.zip	File processing finished	Harvest Simulator Sim   Test	Setup	22.0 KB	Mar 6, 2020
DataManager_158350994588.zip	File processing finished	Harvest Simulator Sim   Test	Documentation	900.3 KB	Mar 6, 2020
DataManager_158350559938.zip	File processing finished	cm02 CM   Connect Mobile	Setup	19.4 KB	Mar 6, 2020

## Upload Files

### Upload

Find files and quickly upload them on both Windows PC and Mac; drag and drop after clicking [Upload Files](#) button.

## Find and Filter Files

### Find File

Use the filter menu to quickly search for desired files based on name, date, or other attribute.

## Download Files

### Download

Download files to a USB drive or Data Manager; use your preferred format/tool.

## Assign Files

### Share Files

Use the check box to select files you want to Share (Assign) with partners.

## Other Actions

### Transfer

Use the check box to select files you want to send to equipment (via Wireless Data Transfer).

### Archive

Use the check box to select files you want to archive (remove from list, but still available if needed).

Need more information or help using Files Manager? [Visit our help site for tips and how-to videos.](#)

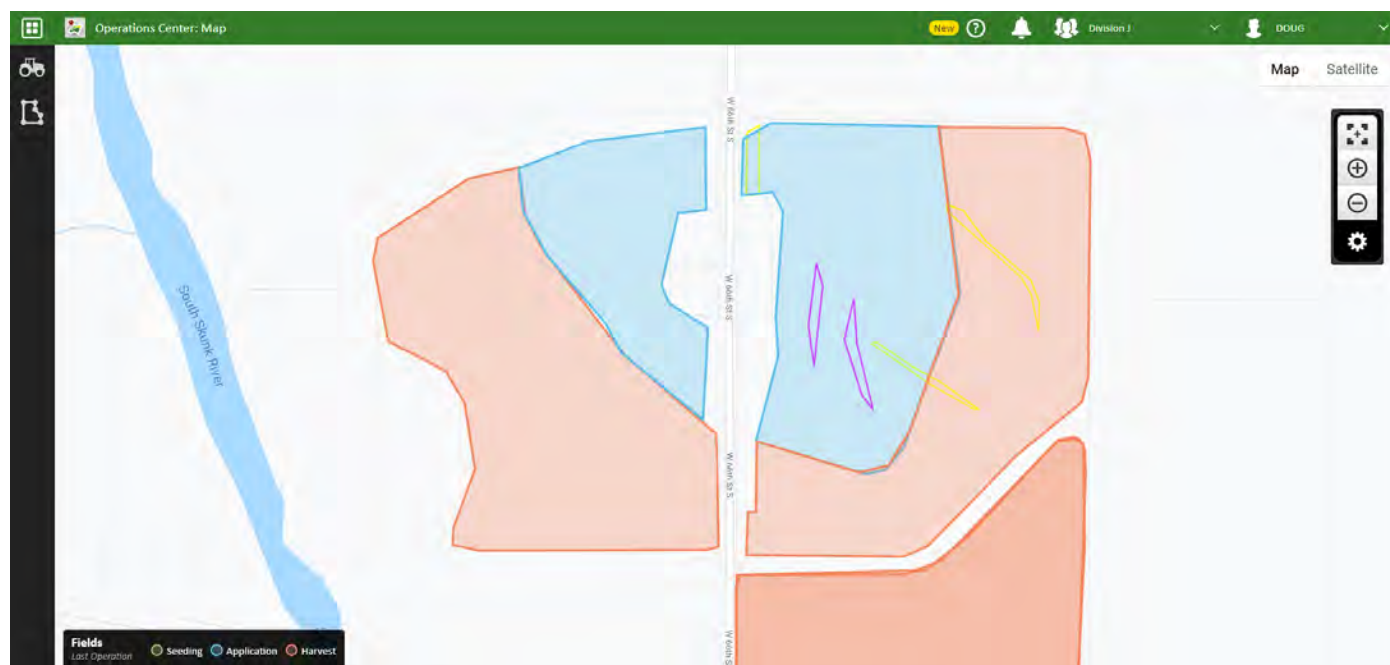


# Operations Center: Map

View equipment, fields, and location history



JOHN DEERE



## Customize what you see on the map

Click the **Map Layers** button:



Turn layers on/off.

Click **Location History (in Map Layers)**

See where your equipment was on any 2 days.

## View information about your equipment

Click the **Equipment** button:



Add/rename/delete equipment and modify offsets.

If JDLink™ is enabled, view location, establish Remote Display Access (RDA) session, send files via Wireless Data Transfer (WDT), and get directions to the machine.

## View information about your fields

Click the **Fields** button:



View area and last crop, and get driving directions.

Click the **Details** button (while viewing a field):

Add or view prescriptions, view job information, merge and unmerge fields (and agronomic data).





# Agronomic Report

View and print agronomic records

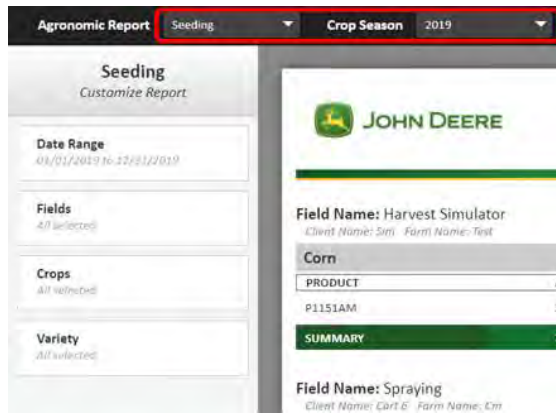


JOHN DEERE

## Generate Reports

### See all your agronomic reports

Select the operation type and year you'd like to view.



## Filter

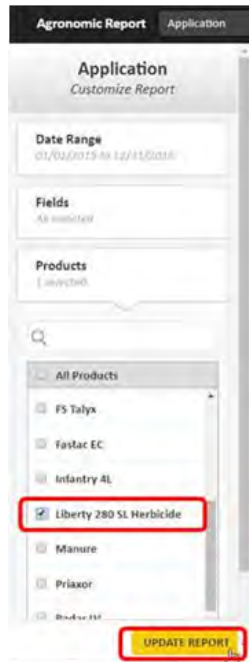
### Filter to just the information you want

View everything or narrow your search by selecting specific crops, varieties, products, or fields.



## Search

### Limit your search to just what you want

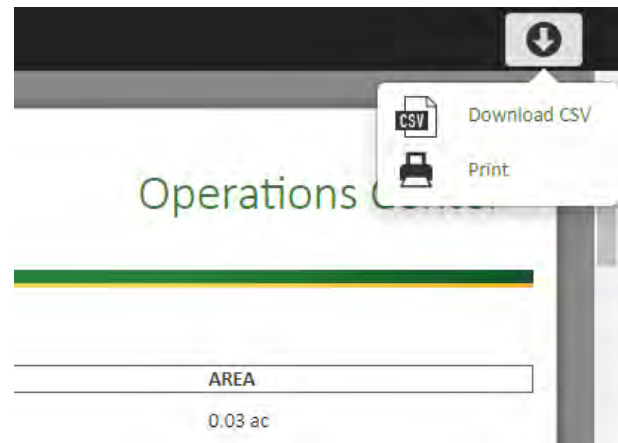


Example: see all fields where you applied Liberty.

## Share

### Share information

Print the data to PDF or CSV file.





# Field Analyzer

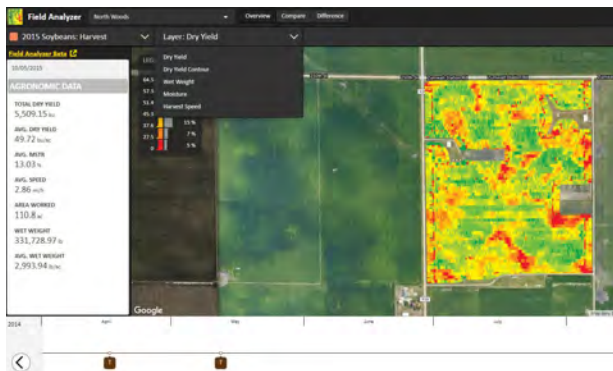
Data analysis & editing tool



## Analyze Operations

Review operational data for Tillage, Application, Seeding, and Harvest practices.

Toggle on layers for agronomic analysis, viewing field trends, and machine performance information. Layers viewable depend on machine functionality.



## Manage Recorded Data

Click the pencil tool in the legend to edit recorded data. Editable features include varieties, chemicals, and crop type/year. Post calibrate harvest data from scale tickets or adjust wet weight of crop harvested.

Click the trash can to delete an operational layer.

## View Operations on a Timeline

Operations will be listed on timeline for users to quickly toggle on and view within a selected cropping year.

Color coded operations on timeline represent tillage (purple), seeding (green), application (blue), and harvest (orange).

## Compare Layers

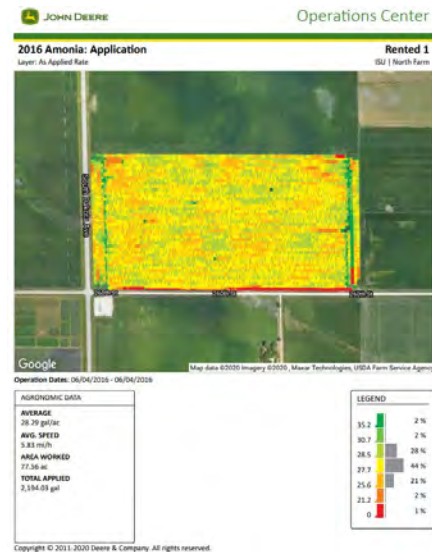
Compare 2 layers at the same time side by side to help identify trends in land and cropping practices.

Compare layers of different operations or layers of same operation across selected cropping years.

## Export PDF Record

Export a layer as a PDF. PDF will include agronomic data.

Partnered Orgs or trusted Ag Service Providers may access data and generate the same reports.



## Link to Agrian Prescription Creator

While viewing a layer suitable for prescription creation, users access the Agrian Prescription Creator from Field Analyzer.

Accessing Agrian from the icon auto populates Client, Farm, Field, and Boundary info.



# Field Analyzer Beta

Advanced data analysis & editing



## Data Drawing Tool

Review operational data for Tillage, Application, Seeding, and Harvest practices.

Break down portions of a field for deeper data insights.

Use drawing tools while comparing or overlaying various layers.



## Legend Template

Create a template for quick legend changes.

Toggle on template to better visualize data using the same numbers and color scheme.

## Flags

See flags created from the MyOperations App, where users can input flag details with option to attach a photo visible in Field Analyzer Beta.

## Data Drawer

Quickly analyze data attributes between operations, such as yield by soil type, by variety, or by application (herbicide, fungicide, etc.).

## Weather Data

For users with Mobile Weather Stations: view Wind Speed, Wind Direction, Sky Condition, Delta T, and Relative Humidity layers.

For Gen 4 users who entered weather data manually: view layers here.

## Map Tools

View yield maps of the same crop in the same field side by side with a third map highlighting areas of the field performing higher and lower.

Overlay and change contrast to view overlapped layers.

Compare/view any operational data or soil map side by side.



## More Functionality

See additional layers not visible in Field Analyzer.

Export as a printable PDF.

Access quick link to Agrian Prescription Creator.

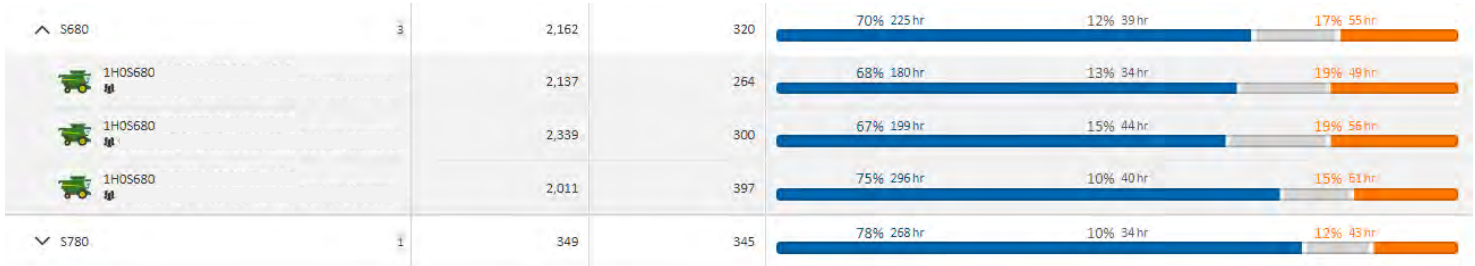


# Machine Analyzer

Dive into machine performance metrics



## Compare Machine Metrics



### Actions

Compare similar machines to analyze various metrics like hours, fuel usage, engine loads, speed, etc.

Select a machine group to see which are most productive.

## Easily Export Data

### Action

Click *Export* to easily export data into a PDF or spreadsheet.

## Create Custom Views

### Actions

Compare machines by the metrics that matter to you.

Under "View," select *Add New View* then check the metrics you want to see.

## Filter and Sort by Key Information

### Actions

Filter by view, date, machine type, and activity.

Sort by machine or organization.